

NEWS BULLETIN



THE SOCIETY OF ANTIQUARIES OF NEWCASTLE UPON TYNE

No.72 December 2021

CONTENTS

President's Message.....	1
Activities in 2021 and 2022.....	2
Speakers Next Year.....	2
Hadrian's Wall 1900.....	3
Birdoswald Visit.....	4
Capital Newcastle Remade.....	4
The Stories Behind our Collections.....	5
Entangled Lives in the Archives.....	5
Diverse Communities in Gateshead.....	6
Meetings and Events.....	7
Deaths.....	11
Note from the Editor.....	12

WHO WE ARE AND WHAT WE DO

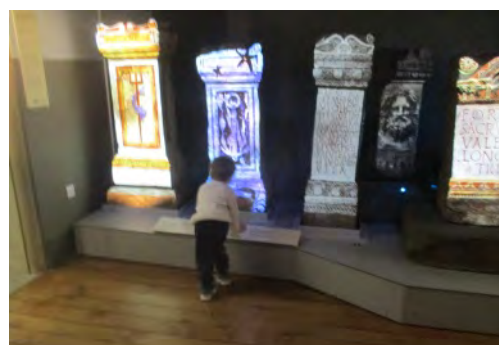
The Society of Antiquaries of Newcastle upon Tyne promotes the preservation, study and enjoyment of historical and archaeological heritage in general, and of the North East of England in particular. We have nearly 800 members, and always welcome new ones.

We are planning a full programme of public events, lectures, walks and visits, and social activities for 2022. We are guardians of world-class collections of antiquities and archives, and of a library of over 30,000 books and journals. We sponsor and publish research into North East history and archaeology of all periods.

For more information, look at our website, www.newcastle-antiquaries.org.uk or contact us at SANT, Great North Museum: Hancock, Barras Bridge, Newcastle upon Tyne, NE2 4PT, phone 0191 231 2700, e-mail admin@newcastle-antiquaries.org.uk. For as long as Coronavirus problems persist, please use e-mail if at all possible.

PRESIDENT'S MESSAGE

As the end of 2021 approaches, we have all felt some welcome return to normality after the worst worries and restrictions of the pandemic. I am pleased that the Society has remained active throughout: our Zoomed lectures have never ceased and since the last *News Bulletin* you should have received yet another issue of *Archaeologia Aeliana*. Our collections in the GNM are open to the public once more, and there is a new and colourful display in the Hadrian's Wall gallery. It has been a delight to see members once again at live lectures, and our Library has now re-opened, following the



Our newly lit altars in the Great North Museum

appointment of a new Library Co-ordinator. Welcome also to our new members, including the students who have taken advantage of our new online membership.

It has been very sad to have to say goodbye to one of our distinguished past-presidents, Beryl Charlton, who died in July. For another of our past-presidents there has been good news, and congratulations are in order to David Breeze for his award of the British Academy's prestigious Kenyon medal.

2022 promises to be a rich year. As you will see in your programme card, several Roman-archaeology themed lectures in coming months reflect the celebration of the 1900th anniversary of Hadrian's visit to Britain in AD 122 and the inception of his great Wall which has been the life's study of many of our members. However, medieval and modern themes are also well represented.

Your mailing includes an explanation of the new arrangements for election of officers and council (the Charity Trustees). Now that we are an incorporated charity, these will take place at the April AGM rather than in January as previously. Our 2020 report and accounts are on our website, though not, owing to a quirk in the rules relating our our change in status, on the Charity Commission's site.

Warm thanks to all members for their patience and support of the Society through the pandemic, and a Happy Christmas to all.

Nick Hodgson

ACTIVITIES IN 2021 AND 2022

Covid defeated our efforts to run the full programme of outdoor events in 2021, but there were visits to Newburn church and village in July and Birdoswald in August. Our Summer Social went ahead in the newly-refurbished St Nicholas's Cathedral with an excellent tour by David Heslop. As well as another of our Coffee House series, we continued our monthly lectures, initially on Zoom and then from August in person and Zoom ('hybrid' as it is termed in higher education). After a rather shaky start in the Cathedral we returned to meeting in Newcastle University again from September onwards, livestreaming as we did so. This means that we can continue to serve the wider audience we tapped into during our online-only days members living too far away to meet in person, perhaps even on another continent, can Zoom in. On top of this, most of our talks have been recorded, and are now on our YouTube channel to watch again.

Looking ahead to 2022, our first event of the year is our customary Winter Walk, this time on 15 January in Elswick, West Newcastle, the area that pioneering woman surgeon Ruth Nicholson (1884–1963) was born and grew up in. We are meeting at 11.00 in Kenilworth Road, where a plaque has recently been put up. It is just to the east of Elswick Park See our website for more details.

We intend to have our usual social get-together after the January lecture, even though the Anniversary meeting has lost its formal status with our change of constitution. Check the website nearer the time for the venue.

The Activities Committee are hoping to resume country visits and walks in the summer, and a Summer Social event. Difficulties in planning ahead means we have not been able to include details of these in the programme card, but they will be announced on the website and in our regular e-bulletin.

Richard Pears



The new plaque to Ruth Nicholson

SPEAKERS NEXT YEAR

Our 2022 schedule is packed with exciting speakers. We will be joining partners across the North East and North West of England to celebrate the 1900th anniversary of Hadrian's Wall,

and inviting speakers who will start thought-provoking conversations on the subject. At our January meeting, Past President Lindsay Allason-Jones will discuss a group of little-known sculptures from the hinterland of Hadrian's Wall. Dr. Rob Collins will talk in March, controversially, on 'A most egregious misappropriation: The wretched coupling of Hadrian and Wall'.

In June, Frances McIntosh and Elsa Price, curators respectively at English Heritage and Carlisle's Tullie House, will talk about the Wall collections they look after. August plans are still being worked on, and will be announced in due course. In September, Tony Wilmott will update us on excavations at Birdoswald, and in November Dr. Trudi Buck of Durham University will discuss death and burial practices on the Wall.

Of course, there is much else to talk about! In February Daniel Riddell, PhD student at Northumbria University, will consider the activities of Scandinavian and German merchants in Newcastle between 1840 and 1920. In April, archaeological textiles specialist Dr. Alexandra Makin will discuss early medieval embroidery and the St. Cuthbert Maniple re-creation project.

We hope to see you in our new home, in Newcastle University's Armstrong Building room ARMB1.49 for these lectures. However, our Public Lecture in October is in the Curtis Auditorium in the University's Herschel Building. Dr. Martin Goldberg from the National Museum of Scotland will talk about the museum's collections, and especially the Galloway Hoard.

Marta Alberti

HADRIAN'S WALL 1900

2022 sees a very significant birthday for Hadrian's Wall: its 1900th! Despite the hiatus caused by Covid, plans are well in hand for a celebratory festival across the year. It begins with Hadrian's birthday on 24 January and runs to the end of Saturnalia on 23 December.

The aim is to explore what 1900 years of the World Heritage Site means to people today. We want to engage with communities along the wall, from South Shields and Wallsend in the East to Maryport and Ravenglass in the west, and invite everyone to respond to the festival in whatever ways they feel appropriate.

We have had over 150 proposals for activities, ranging from exhibitions to dance pieces to theatre productions to soundscapes and art trails. There will be at least 5 conferences, and heaven knows how many talks, lectures, and publications. We are also inviting annual events, like village fetes, to include elements linked to the festival. Society members are already involved in talking, writing, and organising events around the Wall celebrations. But we'd like to see more of you! It's not too late to develop your own proposal for the festival and celebrate what living on or near Hadrian's Wall World Heritage Site means to you.

Fundraising to cover the costs of the co-ordinating team and all the marketing and communications work has been made much easier by an award from the North of Tyne combined authority. The festival is being co-ordinated by a steering group on behalf of the Hadrian's Wall Management Board, and marks the start of a new phase in the life of the Wall. A 10-year investment strategy will see the improvement of sites and facilities, ensuring that people can continue to enjoy the monument in the years ahead.

Please do get engaged, and involve other societies, friends and colleagues in the festival. Sign up for the festival newsletter and register your project ideas via the Hadrian's Wall website <https://hadrianswallcountry.co.uk/hadrianswall1900>.

And we want all of you to join in the festival of Saturnalia next year.

Bill Griffiths

Chair of 1900 Festival steering group

PS – for the history pedants – we know that AD 122 is not universally accepted as the foundational year for Hadrian's Wall, but it is there or thereabouts, and is the generally accepted date. And we certainly did not have time to deliver the festival in 2021!



The logo for the 1900 Festival

BIRDOSWALD VISIT

Birdoswald is the Hadrian's Wall fort where there is the clearest evidence of post-Roman occupation by local warlords, who might themselves have been Roman officers or their descendants. A four-year (at least) project is currently under way there, a collaboration between Newcastle University, Historic England and English Heritage. An eight-week season this year ran from June through to early August. It had the dual purpose of investigating the extra-mural settlement area on the east side of the fort, and training archaeology students from the University, under our member Professor Ian Haynes with new



The Antiquaries visiting Birdoswald

bands of 20 or so first- and second-year undergraduates arriving every fortnight. "They arrive knowing very little, and by the end of the fortnight we aim to have them grasping the basic archaeological skills," Ian said. "Then we wave them goodbye and start with a new group".

In early August a group of Antiquaries were given a tour by Ian and co-director Tony Willmott (Historic England) round the two areas opened up. In the first area, they were re-excavating a building first discovered by Ian Richmond in the 1930s, and interpreted by him as a 'signal tower'. They have found the walls just where he reported, with 13 brick courses standing, neatly capped, but the structural and finds evidence point to something substantial, possibly the edge of a bathhouse complex. There is evidence of water pipes running through the extensive area, a possible medieval burial pit, and a thick layer of clay deliberately spread over much of the immediate area. And what to make of a strip building in the second dig area, perhaps a shop or tavern, which extends directly over part of the roadway leading from the partly-blocked east gate of the fort? Dateable artefacts from both areas are overwhelmingly second and third centuries, but with a few tantalising sherds of fourth-century pottery were the buildings visible but unused in later years? Or was there continued use? Our monthly lecture in September 2022, to be given by Tony Willmott, will doubtless reveal much more.

Many thanks to Ian, Katie Mountain, and Tony Willmott for the time and trouble they took in arranging the visit, and for showing us round. For more information, visit <https://birdoswaldproject.com>.

CAPITAL NEWCASTLE REMADE

Capital Newcastle, our pamphlet showing how and where the five orders of neoclassical architecture can be seen in the buildings of Newcastle, has been reprinted and is once again available to members.

The idea for the pamphlet came from Sir John Soane's House in London's Lincoln Inn Fields. Some years ago they published *Capital City*, laying out a guided walk from the British Museum to Somerset House. Looking at their very first subject, the painted ceilings in the entrance hall at the BM, it seemed astonishing that so many visitors walked beneath them without any awareness of their intricate and elegant enrichments.

Being prompted to look up (and sometimes down) at architectural features was only the first of the pamphlet's benefits. It gave a visual guide to the elements of each of the five orders, and then a brief commentary on each building.

Like London, Newcastle is rich in buildings that demonstrate the continuing influence of the ancient world upon our built



environment. So our Newcastle version copied the Soane idea (with permission) for our own city. Just as much as in London, we can find examples of 'pure' forms of the five orders as well as many creative variations. On one side of a fold-out sheet, *Capital Newcastle* sets out the principal features of each order. On the other side, it guides readers through a series of short walks in the city to enjoy some of Newcastle's more interesting use and adaptation of the orders, from Trinity House on the Quayside to the bus depot on Portland Terrace, Jesmond.

Grace McCombie and I were in at the start of the project, with others brought in to help during a long gestation period. The superb map and attractive layout were the work of Cate Davies at Preconstruct Archaeology. 3,000 copies were printed in September 2018. A thousand or so went out to all our members and those of the Northern Architectural History Society, and there has been a steady demand for the rest. By mid-lockdown we were down to a last handful of copies, and the decision was taken to reprint.

A pdf is also available on our website.

Alan Beale

THE STORIES BEHIND OUR COLLECTIONS



Our bronze Greek cross, picture courtesy Andrew Parkin

Have you ever wondered about the stories that lie behind our items on display in the Great North Museum? They all have their histories.

One of our biggest Roman Altars, set up by the Tungrian cohort, spent some time supporting a chimney piece in a farmhouse. I could not find out when it was manhandled into this position, nor what happened when it was moved out again by the landlord in 1813! Our tiny hollow bronze cross with Greek letters inside is thought to date from the early 6th century, and could be used as a small hand-held press, probably pressed gently into bread-dough. Unsurprisingly, none of the products with this Christian decoration have been found.

Our 15th century gold fede-ring brooch would have been wondrous to behold when it was first made. Inscriptions on both sides would have been highlighted by a background layer of enamel. When acquired in 1930, it seems to have been a hit with members, and 25 gilt copies were made and sold off shortly.

All these stories have come from my research for a planned leaflet, highlighting seven different objects on display. The leaflet available will be at the Museum, and

provide links to information that can be read on your mobile phone or tablet while there. This then leads through to a longer version, with much more detail and internet links to images and sources, to read at home. The first three stories are already on our website (click on Virtual Museum under the Library and Collections tab at the top), though all are works in progress and may well change as time goes on.

Howard Cleeve

ENTANGLED LIVES IN THE ARCHIVES

One of my tasks when I joined Northumberland Archives as Senior Archivist in January 2020 was to trawl the catalogues for documents related to Black history.

I came across an 'indenture' in the Newcastle Antiquaries' collection, dated 1815. At first glance, this looks like any of the other early nineteenth-century property deeds we hold at Northumberland Archives. However, the "property" is fourteen named people, and they are being sold to Jacob Graham of Jamaica by John Heward and his wife Mary, of Brampton, Cumberland.

There are two separate family groups. Two women, Beck and Eliza, are listed with their children and the deed states "...the present and future issue offspring and Encrease of the

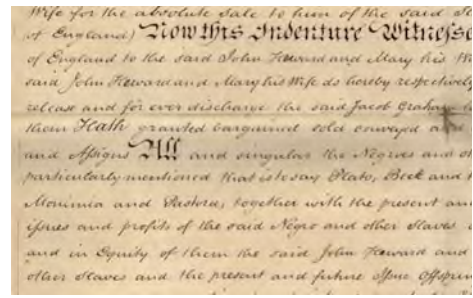
Females...” will also belong to Jacob Graham.

Graham (born 1726) moved to Jamaica from Cumberland in 1746. Probably he worked first for other people on the island while saving money and buying land. By the time of his death in 1816, he owned several plantations including Lapland, which is mentioned in this indenture, and 157 enslaved people.

Graham had at least seven children by two enslaved women on his plantations. As chattel property under Jamaican Law, enslaved women had no legal right to give or deny sexual consent. He had his children baptised and manumitted (made legally free). However, Statira, the mother of his younger four children, was still enslaved at the time of his death. He ‘left’ her in his will to one of his older children. Mary Heward was herself one of Statira’s children by Graham, so had been born legally enslaved.

Graham left property and money to his Jamaican children, but most of his estate went to his nephew, Newcastle businessman and plantation owner John Graham Clarke.

Northumberland Archives bid successfully to Historic England for funding to create teaching resources around the documents I had found, including this one. These are now on www.northumberlandarchives.com/learn/.



Part of the Heward-Graham deed

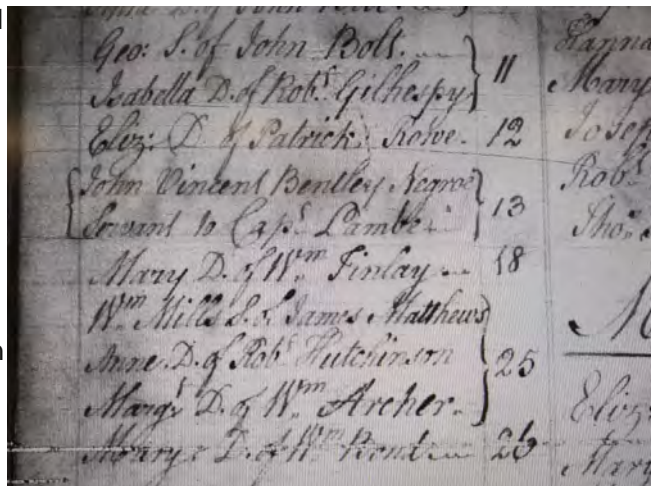
Jo March

Note For an image and a transcription of the deed, put the reference SANT-DEE-05-01 in the search box on our website home page. Thanks to Lynne Farquharson for the transcription. Much of the original research about Graham comes from Boundaries of Rule, Ties of Dependency, by Christer Petley, a 2003 thesis for Warwick University. Graham Clarke’s history was explored in Hidden Chains (2008), by John Charlton.

DIVERSE COMMUNITIES IN GATESHEAD

Early in 2021 my colleague Silvie Fisch and I started looking for historical evidence of Gateshead’s diverse communities, especially Gateshead’s experience of the transatlantic slave trade.

Physically searching through the records of births, marriages and deaths from the late sixteenth century onwards was our best bet. We hunted through the microfiched registers for St Mary’s Gateshead for the oddities – notes added in the margins, casually recorded scraps of data that stood out as different on the page. We became adept at reversing images into negatives, seeking out other words in the same hand to determine letters and learning the shorthand and contractions dear to generations of curates and church wardens.



John Bentley’s entry in the St Mary’s Parish Register. Image courtesy of Gateshead Archives and Library Service

Slowly, enslaved people emerged from the archives, beginning with the record of a burial in St Mary’s church on 13th February 1776. It reads, ‘John Vincent Bentley, negroe servant to Captain Lambe’. We have not been able to find any more information about John Bentley, not even how old he was at death. Captain John Lambe, however, was the son of the vicar at St Mary’s, William Lambe. John was ‘lay rector’ (a post which gave him an income but no church duties) for a parish near Alnwick and died at Gateshead Hill in 1790 leaving a ‘considerable sum’.

We are assuming that the term ‘servant’ really meant John Bentley was enslaved, but we cannot prove it he is too early to appear in slave registers. In a later entry, Hannah, daughter of John Bentley, was also buried in St Mary’s on 17 September 1786.

There are many others. For some, their status is baldly given as ‘slave’. For others, their

point of origin offers the only clue. A number have been included in a downloadable teaching pack for Gateshead Libraries and Archives Service (search for Local History Teaching Resources on Gateshead Council's website).

Many thanks to Jenifer Bell of Gateshead Archive Service for her expertise in pulling together sources of information, and Paul Crooks for his invaluable advice on all aspects of Black Afro-Caribbean history and genealogy.

Rosie Serdiville

MEETINGS AND EVENTS

May 2021



Addinston hillfort near Lauder, picture courtesy Trimontium Trust

Dr John H Reid spoke about *Trimontium and Beyond*. He had, he said, been fascinated by the Roman site at Newstead near Melrose in the Scottish Borders, since childhood. The fort covers 15 acres, three times the area of Housesteads. It saw intermittent occupation for a hundred years or more, and was large enough to have its own amphitheatre, as seen in the dog-leg course of the modern road.

Excavations in 1905–10 had unearthed large volumes of material, with bronze surviving well because of the anaerobic conditions. Much of this was on display in the National Museum of Scotland including

lorica, standards, and cavalry 'parade' helmets. An unusually large number of cavalry horses had been piled into the pits, together with human remains, particularly heads or part of heads. Scholarly interpretation of these enigmatic remains is varied – was Trimontium fort overwhelmed by a catastrophe, was there an orderly abandonment, or were these remains part of a ritual? Dr Reid linked this question with long-standing but possibly erroneous perceptions of the Romans in Scotland – that they invaded into a nearly empty landscape, that their army was invincible, and that they had a positive or minimal effect on the indigenous population.

The Trimontium Trust, which he now chaired, had been formed in 1988, with Eric Birley and aerial survey pioneer Kenneth St Joseph as trustees. For more than thirty years it had run a small museum with guided tours to the site. They had raised funds for a complete refurbishment including new digital interpretations of the site. Phase 2 of the project would include much enhanced education facilities, and a laboratory equipped for 3D visualisation. This would tie in with a project to record and archive Iron Age remains, systematically surveying and reassessing the Roman impact on the hillforts and cultivation sites in Southern Scotland and the Cheviots.

The Trimontium Trust is at www.trimontium.co.uk, and the new museum opened on 2 August 2021.

Coffee House June 2021



Part of the Shefton Archive, picture courtesy Daisy-Alys Vaughan

Daisy-Alys Vaughan talked about the Shefton Collection at the Great North Museum (GNM), while Rheba Macha discussed representations of Black people in Western collections of Greco-Roman art.

Daisy-Alys explained that objects such as Greek pottery were usually displayed with a simple description of what they were, and a date, without any reference to where they had been during the millenia between then and now. So she was looking at the full history of objects in the collection, making use of the Shefton Archive, for an online exhibition, www.storiesfromthearchive.org. Professor

Shefton threw very little away, so the purchase, and in many cases the provenance, of items was peculiarly well-documented. She could often find out from the auction catalogues where the objects had been immediately before purchase. Earlier ownership was more difficult to trace. In one example, however, a figured vase in the Shefton Gallery could be seen in a drawing of the Hope collection made in the nineteenth century.

Rheba explained that she was investigating eighteenth and nineteenth century attitudes towards Black Africans in Greco-Roman collections. These were rooted in the Western Enlightenment, with display of items from the classical past a way of enhancing social status. Alongside this was the development of 'race science', with a formulation of light skin equalling 'civilised', dark skin 'savage'. The Apollo Belvedere was thus seen as the ideal of physical beauty. In reality, such marble statues would originally have been painted, but this was not acknowledged by the museums, and the numerous plaster casts were never painted.

Rheba was compiling a database of objects showing Black Africans in the museums – when they had been acquired, how they were displayed, what they were meant to convey, how the museum's attitude had evolved through time. Often, they had not been identified as such, while others had derogatory labels. Museums were now working to put things right, but catalogues were vast, and resources limited, so this would take time.

Daisy-Alys can be contacted on d.v.c.vaughan1@newcastle.ac.uk. Rheba is on rebecca.a.macha@durham.ac.uk.

June 2021

Richard Atkinson talked about *Mrs Atkinson's World*, describing one of the central characters in his book about his Atkinson ancestors during the eighteenth and nineteenth centuries.

The family were up to their necks in the business of slavery, and also had roles in the American War of Independence and the French Revolutionary Wars. It was easy to like Bridget, 'the matriarchal glue holding the family together', but her five sons were involved in activities which were quite inadmissible by today's standards.

Bridget Atkinson was born in 1732, and raised in Kirkoswald. Her father Michael Maughan was a mining engineer working for the Duke of Queensberry. Bridget's husband George was a gentleman tanner and banker at Temple Sowerby, near Appleby her brother-in-law, the West India merchant and East India Company director Richard 'Rum' Atkinson, died extremely wealthy, leaving his vast fortune to his many nephews and nieces. The family's Newcastle connection came through Bridget's daughter Dorothy, who married town clerk Nathaniel Clayton.

Four of Bridget's five sons went to Jamaica to manage the family's sugar estates, where the labourers were enslaved men and women. One son, Matthew, was actively engaged in slave-trading another son, Michael, came home from India in 1804, after more than twenty years' absence, and became convinced that the rest of the family had stolen Jamaican estates that were rightfully his. Long and expensive law suits followed, dissipating much of the family fortune.

Meanwhile, in Westmorland, Bridget was building up a magnificent collection of books, coins and shells, and transcribing the annals of the local Clifford family. Her visitors included Rev John Hodgson, a guiding spirit behind the formation of Newcastle Antiquaries. Bridget's son Matthew and son-in-law Nathaniel Clayton were two of the founding members in 1813, while she herself was given honorary membership. It was a long time before women were admitted as full members.

Bridget's collections were inherited in due course by her grandson John Clayton, and were housed in his museum at Chesters, but were sold at auction by her descendant Jack Clayton in 1930.

Richard's book, *Mr Atkinson's Rum Contract*, is published by 4th Estate, price £9.99 (paperback). He can be contacted on rumatkinson@gmail.com.

July 2021

Our President Nick Hodgson talked about the discovery and excavation of the Roman baths at Wallsend in 2014. Although their existence had been known about for some time, it was only with the creation of the community archaeology project WallQuest, and the work of its volunteers, that they had been found and excavated.

The reconstructed bath building on the Segedunum site was close to the fort, but the actual baths had been known to be on a different site. Their remains had been seen by the Rev John Hodgson in 1814, after they had been dug up by workmen building a waggonway down to the Tyne. He had been too late to rescue the coins and artefacts from removal by the workmen.



The baths excavation in progress picture courtesy Nick Hodgson

Hodgson's description of the site was not very precise, but research by WallQuest volunteers had suggested that it was underneath the recently-demolished Ship Inn, and this proved correct.

The foundations and lower levels of the bath house were very well preserved. They were full of demolition material, probably dating from the nineteenth-century levelling of the site, when saleable building stone was also removed. Dateable material related to the second and third centuries, with a complete absence of fourth-century items. From this one could assume that the bath house was abandoned by the early fourth century, with a replacement inside the fort not yet found.

Bath houses had been found at a number of forts along Hadrian's Wall, built to a fairly standard plan, but several remained undiscovered. The most tantalising was at Benwell, for which there was an eighteenth century drawing of remains visible then, but not seen since.

The baths were now on permanent public display, and the excavation report

was available from Tyne Wear Museums online bookshop (search for it on shoptwmuseums.co.uk/collections/all). Nick can be contacted on Nick.Hodgson@Durham.ac.uk.

August 2021

Our past-president Richard Pears, stood in magnificently at short notice to talk about *Recent Research and 3d Modelling of Newcastle Castle*.

Richard explained that in the past, those studying castles had looked at them primarily as defensive structures. They were now seen much more as reminders of power when their rich and powerful owners themselves were not present. They were massively over-engineered for their military role, rather in the same way as cathedrals were far loftier and more impressive than was needed for simple worship.

Newcastle castle was highly visible from the river and the Great North Road. Henry II ordered rebuilding on a grand scale, at a time when the Scots were making determined efforts to drive their border south. The round tower that replaced the original motte had completely disappeared today. We knew about it from a drawing dated 1545, by an Italian military engineer commissioned by Henry VIII to report on the state of fortifications against a potential French invasion. The Keep probably came later, in a separate bailey, with a wall between the two as at Dover or Bamburgh. The perimeter walls would have had an observation gallery running round inside and observation towers on the corners.

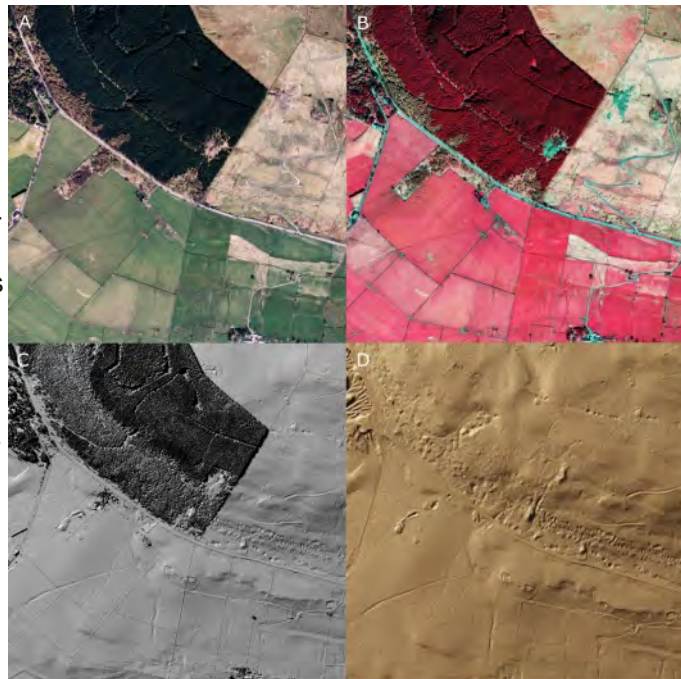
Henry had founded a church, now St Nicholas's Cathedral, outside the castle enclosures, in the 1170s when he decided he did not want the local population coming into the castle. There was a Great Hall, on the site of the current Vermont Hotel, but no trace had been found of accommodation, stables or storage space. Henry had moved the administration of Northumberland to Newcastle, so would have needed space for royal officials, but this might have been a building in Bailiffgate, just outside.

Richard concluded with a spectacular computer-generated 3D 'fly-through' of the site in Henry II's time. It can be viewed on the YouTube recording (re-recorded by Richard after the lecture because the original recording was unusable). Richard can be contacted on richard.pears@durham.ac.uk.

September 2021

Alastair Oswald spoke about discoveries made during English Heritage's Miner-Farmer Landscapes Project. Concentrating on the late Iron Age and Roman periods, he explained that previous research had treated the natural and human environments separately, whereas this

project saw them as interdependent. Historic lead-mining remained a major source of pollution in the region: the Nent was one of the most polluted rivers in Europe. Apart from the lead industry, the heritage of the area was under-researched, while some apparently non-industrial monuments had been misinterpreted. A 'hillfort' near Alston was actually a Norman castle, sited to control lead production. The initial research comprised aerial photography, infra-red imaging and Lidar (airborne laser scanning). Photography was deliberately carried out in spring, when the white flowers of leadwort, plants capable of tolerating high levels of lead, could be distinguished on the imagery. Next, 30 square kms were further investigated on the ground. At three key sites, survey was followed up by excavation by community archaeology group Altogether Archaeology. This methodology had now been successfully rolled out in other parts of the North Pennines.



Different aerial images of 1 square kilometre on the slopes of Mounthooley in the North Pennines.

Courtesy Historic England/ North Pennines AONB

The Roman fort of Whitley Castle (Epiacum), built to control and protect local lead and silver extraction, had seen minimal modern excavation. Detailed mapping of its exceptionally well-preserved earthworks, supplemented by geophysical surveys, revealed far more. Now looked after by a Trust, the site welcomed visitors. In 2018, dismantling a drystone wall which ran across the fort produced Britain's largest collection of Roman military quernstones. One Iron Age example supported suspicions about the presence of an earlier settlement. Close to the fort, two 'native' settlements had been discovered, with typical banks encircling clusters of roundhouses. Over twenty more examples were found scattered throughout the survey area. One, at Gossipgate near Alston, has a 'high street' running between plots containing round houses, a unique hybrid of Roman and native layout. The presence of early lead workings near this and other sites suggests that the Romans were not the first to exploit the region's lead resources.

Alastair can be contacted at the University of York on awpo500@york.ac.uk.

October 2021

The author Alistair Moffat discussed his book *To the Island of Tides a Journey to Lindisfarne*. He explained that the book was published in 2019, in a somewhat different world from the one we inhabit today. His talk retraced his 'secular pilgrimage', from his home in the Borders, through the historical landscape of Scotland and northern England, to the tidal island of Lindisfarne. He had begun in Old Melrose, a headland on the River Tweed where one of the premier monasteries of early medieval Britain had been situated. In 651 the future St Cuthbert had been ordained here as a young man. His Anonymous Life (but not other sources) recorded that Cuthbert had later fled secretly, and Mr Moffat suggested that this was because he wanted to follow the desert fathers' hermetic mode of monasticism.



The Priory ruins at Lindisfarne, picture courtesy Richard Pears

The remains of a 'monks' ford' in the Tweed were still visible from the Old Melrose site, but it

proved impassable when he tried it. He crossed by a footbridge and continued to Lindisfarne, taking in places with 'Cuthbert' or 'Cuddy' in their names along the way, though many of these names would be apocryphal. Arriving at Lindisfarne itself, he had found it mobbed by tourists. Once they had left, the character of the island changed, however, and there was an atmosphere of peace. Going up to the raised ridge of the Heugh, he had concluded that it could itself be viewed as an altar, when seen from St Mary's Church below. Along the seaward side, on the shore, were 'prayer holes' where monks could sit and let the sea wash over them, mortifying the flesh.

He had also visited Inner Farne, where Cuthbert had died. It was nothing but a sea-blasted rock, but while he lived there he had been negotiating with his fellow-monks about his burial, not wanting to become the cult figure he saw as inevitable. He had probably died of a stroke – a rather bathetic end to his lifelong pilgrimage.

DEATHS

David Hide



David Hide, picture courtesy Mark Hide

Our long standing member David Hide died on 24 August at the age of 90. He had served as a Council member, Treasurer, and Holding Trustee.

David was born in Leatherhead in 1931, and read English and History at Trinity College Cambridge. He had a career in personnel management in various industrial concerns, including the British Motor Corporation at Cowley in Oxford. In January 1973 he changed direction, and was appointed as the first full-time Diocesan Secretary in Newcastle in January 1973. At the time, many of the old vicarages were in poor condition, while clergy stipends were at the bottom of the diocesan range.

David's 22 years in the role were transformative, with 29 new vicarages built, stipends improved, and the financial management structures of the diocese much reformed. At the same time, the Church of England nationally was changing, with fewer stipendiary clergy and more reliance on parish resources. In dealing with these changes at a local level, David's consultative style was much in evidence. There were pleas for better-off dioceses to support the poorer ones, and David negotiated a partnership with his counterpart in Winchester which continues to flourish today.

David's interest in buildings went back to his schooldays. In Oxfordshire, he and Hilry restored their 15th century thatched house, and as treasurer of Stanton Harcourt church, he traced the lay rectors, who then funded the restoration of the 1220 church. After he moved north, he recorded and photographed buildings in the Duddon valley in the Lake District. He collected and preserved local farm implements and tools, additions to his long-held knowledge of, and pleasure in, early English ironwork and treen.

David joined the Antiquaries in 1975, and after serving on Council for a number of years, took over as Treasurer in 2002. This also involved supervision of the team managing the Castle Keep on the Society's behalf. David was much involved in drafting the Heritage Lottery Fund bid to refurbish the Castle and re-launch it as a self-standing trust. He ceased to be Treasurer in 2011, but remained as a Holding Trustee. He was Treasurer and then auditor for the Northern Architectural History Society until 2020.

David leaves his wife Hilary, also a stalwart of the Antiquaries, and sons and grandchildren.

Sue Ward, with thanks to Hilary and Mark Hide and the Venerable Bob Langley.

Beryl Charlton, 1937-2021

Beryl Charlton, President of the Society 2002–2004, died in July aged 83. A full obituary will be published in *Archaeologia Aeliana* this is only a small snapshot of her life.

Beryl was born in Newcastle in 1937. She read history at the then King's College, Newcastle,

and afterwards taught for many years at Dame Allan's School. One of her pupils was the daughter of Past President Richard Bailey. He says that she 'ensured that the girls, as well as following the usual curriculum, engaged with small research projects from an early age ... work which excited their interest and engagement with the past'. Lyn Morton, also a pupil, remembers the way her eyes would light up when talking about her archaeological digs.

She did an archaeological training course as part of her degree. Afterwards, she joined George Jobey's Extra-Mural class on prehistory, and his band of volunteers who carried out field surveys and excavations. In 1978–9 she ran the excavation of the Roman cemetery at Petty Knowes. This was published in *Archaeologia Aeliana*, as was a later geophysical survey of the annexe to High Rochester Roman fort.



Beryl Charlton, picture courtesy Rachel Atkinson

She worked as Interpretation Officer for Northumberland National Parks from the 1980s onwards. She also worked closely with the Ministry of Defence on the Otterburn Training Area, and published several books about northern Northumberland.

Beryl married Ron Charlton in 1960, and in 1981 they moved to The Bastle, a half-derelict fortified farmhouse within the walls of High Rochester fort. Even making this habitable involved archaeology – an excavation just outside the fort walls when installing a septic tank for her new home.

She joined the Antiquaries in 1957 and became a member of Council in 1971. She remained on Council for fifty years, until our restructuring in early 2021. During her presidency, Richard Bailey recalls, she faced 'particular challenges over our custodianship of the Keep – problems which she quietly and efficiently solved. The same quiet, tactful, determination to see things through marked her long-term work on the military ranges and, in later years, in the exhibitions, gravestone recording, fund raising and preservation of Elsdon church in which she took a leading role'.

Sue Ward, with thanks to Margaret Mitcheson, Richard Bailey, and Lyn Morton.

NOTE FROM THE EDITOR

I am always glad to have readers' comments or suggestions for the content of the Bulletin. I am also happy to receive contributions from members, but pressure of space means that articles frequently have to be cut, deferred, or dropped altogether. My address is 5 Goldspink Lane, Newcastle upon Tyne, NE2 1NQ, phone 0191 232 2968, or e-mail me at

events@newcastle-antiquaries.org.uk

Copy deadline for the next edition is 10 May 2022. The mailing date will be 8 June. All inserts must be delivered to the Membership Administrator by 30 May. There will also be a Spring Mailing on 30 March, with delivery of inserts required by 21 March. If you want an insert included, please e-mail the Administrator on admin@newcastle-antiquaries in good time for details of the requirements. An electronic copy of any insert must also be provided (as a Word or pdf document) so that it can be included in the electronic mailing.

Printed in England by YPD Creative